



FASC Safety Council News

Florida Association of Safety Councils - Newsletter – 1st Edition, 2004

January ~ February, 2004 ~ Take care! Safety is no accident!

FASC provides a forum for Florida Safety Councils to examine and act on issues impacting driving, occupational and public safety. FASC develops safety education programs available to member Councils individually or collectively. Visit the FASC Website at: www.safety.org

North Central Florida Safety Council
 3710 N.W. 51st Street, Suite A, Gainesville, FL 32606
 Tel: (352) 377-2566; Fax: (352) 377-7544
 Website: <http://www.ncfsafety.com>
 E-mails: mcc@ncfsafety.com ncfscexec@aol.com

North Florida Safety Council
 2003-B Apalachee Parkway, Tallahassee, FL 32301
 Tel: (850) 877-5193; Fax: (850) 877-8428
 Website: <http://www.nflsafety.com>
 E-Mail: nflsc@earthlink.net

Northeast Florida Safety Council
 1725 Art Museum Drive, Jacksonville, FL 32207
 Tel: (904) 399-3119; Fax: (904) 399-8001
 Website: <http://www.nefsc.org>
 E-mail: nefsc@nefsc.org

Suncoast Safety Council, Inc.
 1145 Court Street, Clearwater, FL 33756
 Tel: (727) 373-SAFE (7233); Fax: (727) 442-2321
 Website: <http://www.suncoastsafety.org>
 E-mails: droffey@safety.org; safety@safety.org

Safety Council of Palm Beach County
 770-R S. Military Trail, West Palm Beach, FL 33415
 Tel: (561) 689-4733; Fax: (561) 683-1717
 Website: <http://www.safetycouncilpbc.org>
 E-mail: donna@safetycouncilpbc.org

Southwest Florida Safety Council
 1714 Evans Avenue, Fort Myers, FL 33901
 Tel: (800) 437-3008; Fax: (239) 332-3093
 Website: <http://www.safedrivingsschool.com>
 E-mail: swflsafety1@earthlink.net

Sunshine Safety Council, Inc.
 150 North Beach Street, Daytona Beach, FL 32114
 Tel: (800) 467-7327; (386) 253-6400
 Fax: (386) 252-1875
 Website: <http://www.sunshinesafety.org>
 E-mail: sherrie@sunshinesafety.org

Tampa Area Safety Council
 1113 E. Martin Luther King Jr. Blvd.,
 Tampa, FL 33603
 Tel: (813) 248-3009; Fax: (813) 247-3671
 Website: <http://tampasafetycouncil.org>
 E-mail: TASCPatty@aol.com

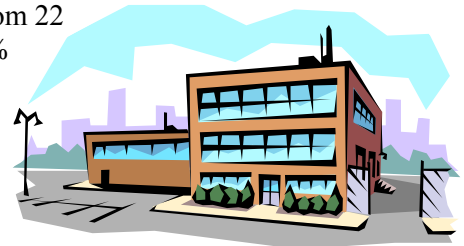
Contact A Safety Council Near You!

OSHA— News from Region IV

Area offices implemented emphasis programs that targeted industries where the largest number of fatalities occurred with gratifying results. Thanks to OSHA's Regional Fall and Electrical Emphasis Programs which increased focus and inspection in these endeavors, the safety rates have improved.

- Between 2002 and 2003, fatal fall fatalities in construction declined by 13 or 25%!
- Fatalities involving electrocution from exposure to energized overhead electric power lines decreased from 22 during 2002 to 13 in 2003—a 41% reduction.

It has been reported that workplace fatality rates in almost all categories decreased in 2002, with over 400 fewer fatalities reported.



Focus on Cooperative Programs:

Most know OSHA for its enforcement efforts, however programs have long existed that offer a cooperative approach to occupational safety and health. There are five distinct ways in which you can take full advantage of Cooperative Programs. These are:

- Alliances
- On-Site Consultation
- Safety and Health Achievement Recognition Program (SHARP)
- Strategic Partnerships and
- Voluntary Protection Programs (VPP).

Region IV has a strong commitment to Cooperative Programs with established Alliances, Strategic Partnerships, Voluntary Protection Program participants, users of on-site consultation programs and SHARPS recipients. For more information about compliance programs visit this website: http://www.osha.gov/dcsp/compliance_assistance/index.html

(Continued on page 2)

WHAT'S INSIDE:

OSHA—News from Region IV (cont. pg 2).....	Page 1
Work Jumbles (First Aid) / Eye and Face Safety / Florida OSHA Offices.....	Page 2
Safe Driving Tips / Recordkeeping Revisited / Safety Issues	Page 3
New Year Safety Tips	Page 4

Word Jumbles

Unscramble the following letters to find some important, sometimes overlooked, items that should be in your emergency first aid kit:

rweestz _____

extal seovgl _____

eetrhmmreto _____

sftir dia kobo _____

Remember, it's a good idea to keep your emergency kit ready and supplied all year. <<

ANSWERS: tweezers, latex gloves, thermometer, first aid book

(Continued from page 1)

Region IV covers the following states: Alabama, Florida, Georgia, Kentucky, Mississippi, North Carolina, South Carolina and Tennessee.

OSHA Florida Area Offices:

Fort Lauderdale Area Office
8040 Peters Road, Building H-100
Fort Lauderdale, Florida 33324
(954) 424-0242
(954) 424-3073 FAX

Jacksonville Area Office
Ribault Building, Suite 227
1851 Executive Center Drive
Jacksonville, Florida 32207
(904) 232-2895
(904) 232-1294 FAX

Tampa Area Office
5807 Breckenridge Parkway, Suite A
Tampa, Florida 33610-4249
(813) 626-1177
(813) 626-7015 FAX. <<

Eye and Face Safety

Each year, thousands of people in the U.S. are blinded from work-related eye injuries that proper use of eye and face protection could prevent, OSHA says. The nation's

workplace safety agency says eye injuries alone cost more than \$200 million per year in aggregate lost production time, medical expenses, and worker's compensation.



OSHA cautions employers not to rely on personal protective equipment alone to provide protection against hazards. PPE must be used along with guards, engineering controls and sound manufacturing practices. OSHA publications 3151 and 3077 are good resources for information regarding Eye and Face Safety. Visit the OSHA website for more information.

Below are applicable standards and recommendations:

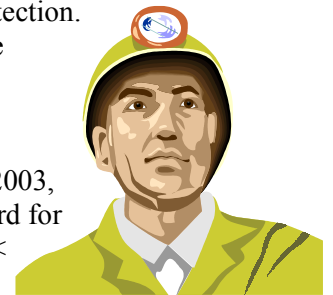
OSHA Eye & Face Standards:

- 1910.132 General Requirements, Personal Protective Equipment
- 1910.133 Eye and Face Protection, Personal Protective Equipment
- 1910.252(b)(2) General Requirements, Welding, Cutting, and Brazing
- 1910 Subpart I Appendix B Non-mandatory Compliance Guidelines for Hazard Assessment and Personal Protective Equipment Selection, Maritime
- 1915.153 Eye and Face Protection, Personal Protective Equipment
- 1918.101 Eye and Face Protection, Longshoring

Construction:

- 1926.95 Criteria for Personal Protective Equipment. Personal Protective and Life Saving Equipment
- 1926.102 Eye and Face Protection. Personal Protective and Life Saving Equipment

Hardhats must meet the requirements of ANSI Z89.1-2003, the American National Standard for Industrial Head Protection. <<



For further information or assistance, contact:

Safety Council of Palm Beach County

770-R S. Military Trail, West Palm Beach, FL 33415 Tel:(561) 689-4733 x12; Fax: (561)683-1717
Visit our website at: <http://www.safetycouncilpbc.org> E-mail: zondra@safetycouncilpbc.org

Safe Driving Tips

The word tailgating has been synonymous with outdoor barbeques and socializing with friends. Tailgating is also a term that affects your safety and the safety of the occupants of the vehicle you drive.

Always allow a minimum of two seconds following distance to the car in front of you.

To ensure you are maintaining this minimum following distance, watch the car in front of you pass an object, then count two seconds (one-thousand-one, one-thousand-two). Your car should then be at the same object. The "two second rule" should be increased to three or four seconds when road conditions are poor, in bad weather, hauling a trailer, driving a vehicle larger than a passenger car, or whenever conditions are not ideal.

Other "rules of the road"

- Use headlights when you use your windshield wipers.
- Wear your seatbelt and ensure your passengers wear a seatbelt.
- Treat intersections with stoplights that have lost power as a four-way-stop.
- Don't run red lights!
- Follow all traffic laws.
- Drive with courtesy. <<



Safety Issues

In a recent survey of safety managers across the nation by *Safety & Health*, the following was noted:

- 75.8% learned about new safety and health trends and procedures from Membership organizations.
- 93.8% said that safety training was given to employees as their means of disseminating safety information.
- 89.3% train employees in CPR & First Aid.

Call your local Safety Council for your safety training. See the front cover for locations and phone numbers. <<

Recordkeeping Revisited

Do you have your new 2004 OSHA Recordkeeping forms yet? The revised OSHA Form 300, Log of Work-Related Injuries and Illnesses is available on OSHA's website at <http://www.osha.gov/recordkeeping/new-osha300form1-1-04.pdf>. The 300, 300A and 301 forms in MS Excel format can be found at the following web address: <http://www.osha.gov/recordkeeping/RKforms.html>.

The new forms, which are required for employers to use in recording injuries and illnesses, have changed in several important ways for 2004.

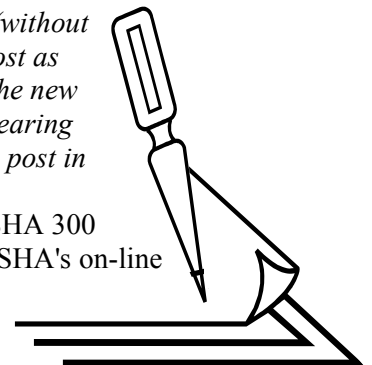
Foremost among the changes are (1) the addition of an occupational hearing loss column; (2) "days away from work" column now comes before the days "on job transfer or restriction"; (3) more clear formulas for calculating incidence rates; (4) new recording criteria for occupational hearing loss in the "Overview" section; and (5) more prominent column heading "Classify the Case" to make it clear that employers should mark only one selection among the four columns offered.

Employers must begin to use the new OSHA Form 300 on January 1, 2004. The new form has the date of revision (rev. 1/2004) located on the form next to the form number.

Injuries and illnesses for years prior to 2004 should continue to be recorded on the appropriate form for that year (i.e., 2003 and 2002 injuries and illnesses should be recorded on the forms for those years). The forms for 2003 and 2002 will continue to be available on OSHA's website at <http://www.osha.gov/recordkeeping/OSHArecordkeepingforms.pdf>.

Additionally, employers should use the old OSHA 300A Summary Form (without the hearing loss column) to post as required in February 2004. The new 300A form that includes the hearing loss column should be used to post in February 2005.

Hard copies of the new OSHA 300 form can be obtained using OSHA's on-line order form or by calling 1-800-321-OSHA. <<



For further information or assistance, contact:

Safety Council of Palm Beach County

770-R S. Military Trail, West Palm Beach, FL 33415 Tel:(561) 689-4733 x12; Fax: (561)683-1717
Visit our website at: <http://www.safetycouncilpb.org> E-mail: zondra@safetycouncilpb.org

New Year Safety Tips



With a new year just starting, its time to start thinking about your New Year's resolutions. **Is increased safety on your New Year's resolutions list? If not—it should be.**

Safety glasses or safety goggles will protect your eyes from dust, flying debris and other hazards. Other safety items include hearing protection to lessen the damage that loud noise can do to your hearing, gloves to protect your hands and even steel toed shoes to protect your feet from heavy, falling objects. Other items of protection—include a hard hat to protect your head, and a dust mask to protect your lungs from suspended dust as you work. Don't drink alcohol at work; drive sober—be responsible.

The single most important item in your safety list is something that you can't even see. It's common sense. Common sense will keep you safe and healthy—use it.

Don't try to lift a heavy object by yourself. Get someone to help you. Use a proper ladder—not a chair or a stack of boxes. When using air or electrically powered nail guns, do not get into the habit of always keeping your finger on the trigger. If you keep your finger on the trigger, you could accidentally fire the gun by bumping the tip against yourself or someone close by.

One of the easiest ways to protect yourself from injury is to keep your work area clean. A clean work area gives you plenty of room to work without having to think or worry about such things as tripping over items in your way. A clean work site makes it easier to find tools and needed materials. Being in the habit of cleaning as you go also makes the final clean up of the day quite a bit easier.

Have a happy and safe New Year! <<

The *Safety Council News* is published six times a year to keep business and industry informed of the Florida Association of Safety Council's activities and safety and health news and developments. NOTE: The information herein was obtained from sources believed reliable and the Association has exercised reasonable care to assure its accuracy. However, the Florida Association of Safety Councils does not guarantee that the contents of the *Safety Council News* are correct and statements from other sources do not necessarily reflect the opinion or position of the Association.

Class Schedule

January

- 14-Recordkeeping & Documentation-PSM Core 9:00 a.m.-1:00 p.m.
- 21-Coaching the Forklift Operator-9:00 a.m.-1:00 p.m.
- 29&30-Maintenance of Traffic Intermediate-8:00 a.m.-5:00 p.m.

February

- 18-Incident Reporting- PSM Core-9:00 a.m.-1:00 p.m.
- 19-Workplace Violence-ASM-8:30 a.m.- 5:00 p.m.
- 25 & 26-OSHA 10 Hour Construction-9:00 a.m.- 3:00 p.m.
- 28 & March 6-ARM 54 prep course

